

GO BEYOND

The world's leading sail maker, North Sails, is bringing the latest revolutionary sail making technologies and innovations to board sports. Molded sails and 3Di composite structures which have dominated yacht racing are now available for windsurfing.

Proprietary 3Di engineering and composite molding methods allow North Windsurf sails to have unlimited shaping or twist. This unlimited shaping is then maintained at an unprecedented level. There's a reason why Volvo Ocean Race teams trust one 3Di mainsail for 45,000+ miles around the world. Solo ocean racers are even circumnavigating the globe with 3Di sails for multiple laps. You no longer have to sacrifice durability for performance, even in windsurfing.

This shaping precision and durability is achieved with weights that are significantly lighter than any other sails ever produced. Now riders can have the confidence to push harder, higher and faster than ever before.

Join the world's leading sail maker, and enter the 3Di revolution. Go Beyond.



XOVER
N
S
NORTH
FLAKA

T A B
L E O
F C O
N T E
N T S

01 3DI TECHNOLOGY
PAGE 5

02 SAILS
PAGE 9

03 MASTS
PAGE 18

04 BOOMS
PAGE 24

05 EXTENSIONS
PAGE 28

06 MAST BASES
PAGE 32



3Di

3Di MOLDED TECHNOLOGY

THE SKIN OF THE SAIL IS THE BASE OF EVERYTHING
IF THE SKIN AIN'T RIGHT, YOU CAN PACK IT UP



1. 3DI™ MOLDED TECHNOLOGY

Molding the sails in 3D determines the shape. This means we can add unlimited shaping or twist in the sails without being limited to batten position. 3Di skins can transition seamlessly from thicker parts, to hold tension and resist impact, to other areas in the sails which are thinner, lighter and softer. 3Di Molding provides unlimited precision in sail making, unmatched in the world of windsurfing. When combined with windsurfing's only simulation software, you hold today's best sail making technology in your hands, as proven by countless victories in the America's Cup & Volvo Ocean Races.

2. DYNEEMA ARAMID

The best sails are made with the best ingredients and the best performing materials. That's why 3Di sails are composed out of Dyneema Aramid. Dyneema is up to 15x stronger than steel. It has very high energy absorption and very low stretch. It is extremely resistant to abrasion, humidity and UV. Aramid is what holds all the Dyneema fibers together. The end result is a composite sail that can be 3D precision molded from 1 piece without monofilm*. It's very strong and has a very direct feel. It translates the wind instantly into forward drive at the flick of your wrist. [* except the window].

3. LIGHT, YET SUPER STRONG

3Di's Composite Dyneema Aramid is layered onto the sail in tapes that are cross linked and thermoformed together into a 1 piece composite sail. These tapes are both positioned in any orientation that you need it and layered into reinforced loads where required. This is done with no panels and no stitching in the sail's body. At the end of the day, the sail transitions seamlessly at microscopic levels. From a strong sail in the high wear lower foot and clew areas, to a light upper sail where the sail needs to breathe and twist. Precision use of the right quantity of materials in the right orientation results in a sail that is both significantly lighter and stronger than any other windsurf sail. Material is only used where you truly need it.

4. INTEGRATED BATTEN POCKETS

In between the sail's layers we use a special material, machine laid, to create the batten pocket. No seams, no panels to join, no stitching. The material bonds to the Dyneema Aramid fibers but doesn't bond to itself. This leaves the sail with a 100% seamless and continuous fiber layout, fully integrated tunnel with space for the battens. Complex material technology with a smart result.





NOT LIKE ANY OTHER SAIL

THE ONLY 3D MOLDED, SINGLE PIECE THERMOFORMED SAIL ON THE MARKET.

DESIGNED WITH UNIQUE WINDSURFING SIMULATION SOFTWARE.

MADE WITH UV RESISTANT DYNEEMA ARAMID TAPE MATERIALS.

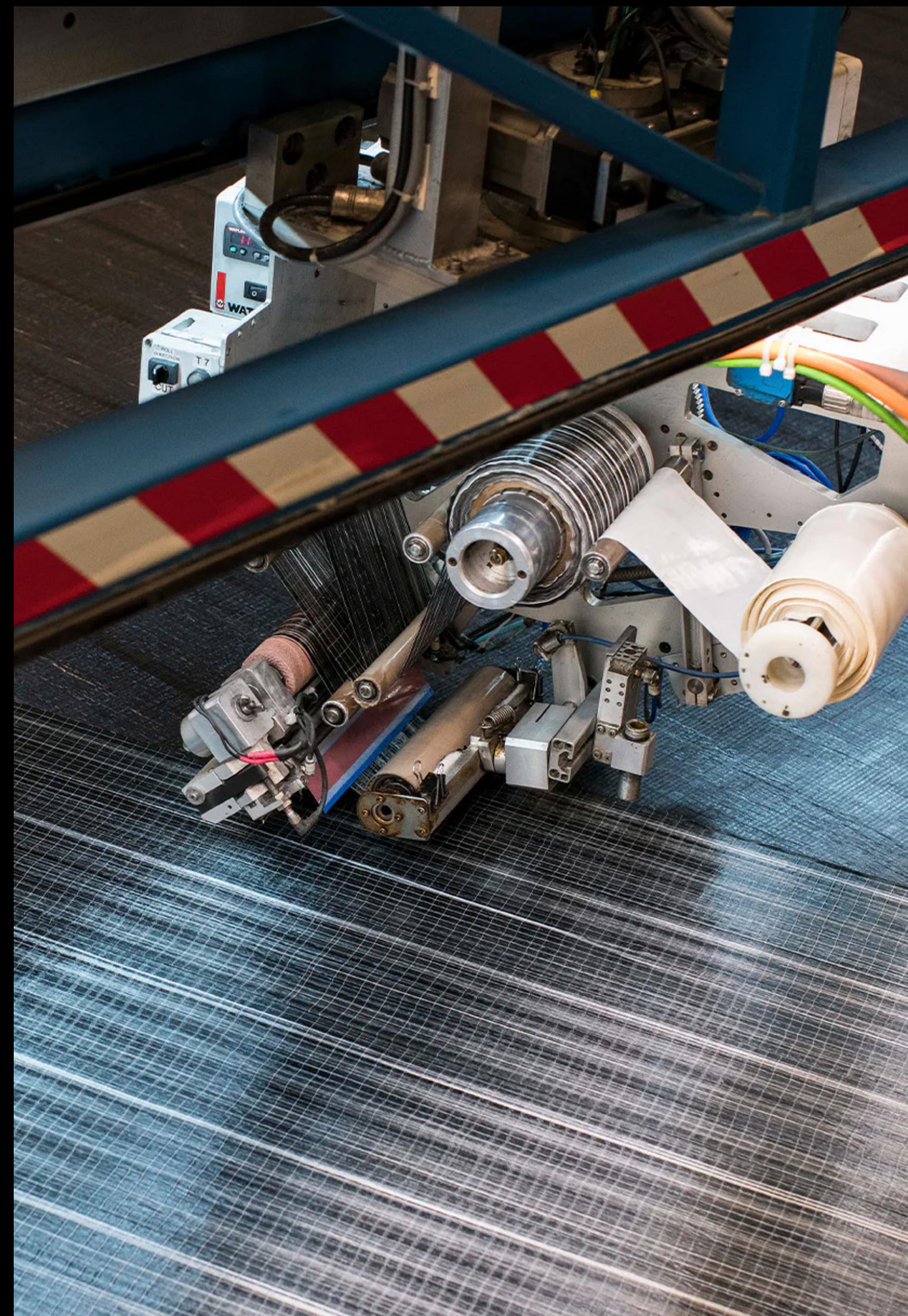
NO STITCHING AND NO SEAMS IN THE BODY.

A SAIL THAT IS SIGNIFICANTLY LIGHTER AND STRONGER THAN ANY OTHER WINDSURF SAIL OUT THERE.

A SAIL SO LIGHT IN THE HANDS THAT YOU USE LESS ENERGY, ALLOWING YOU TO WINDSURF FOR LONGER PERIODS OF TIME.

A SAIL WITH PRECISE SHAPING, HELPING YOU TO SAIL UPWIND HIGHER, FASTER AND EASIER.

A WINDSURFING SAIL UNLIKE ANYTHING YOU'VE EXPERIENCED BEFORE.

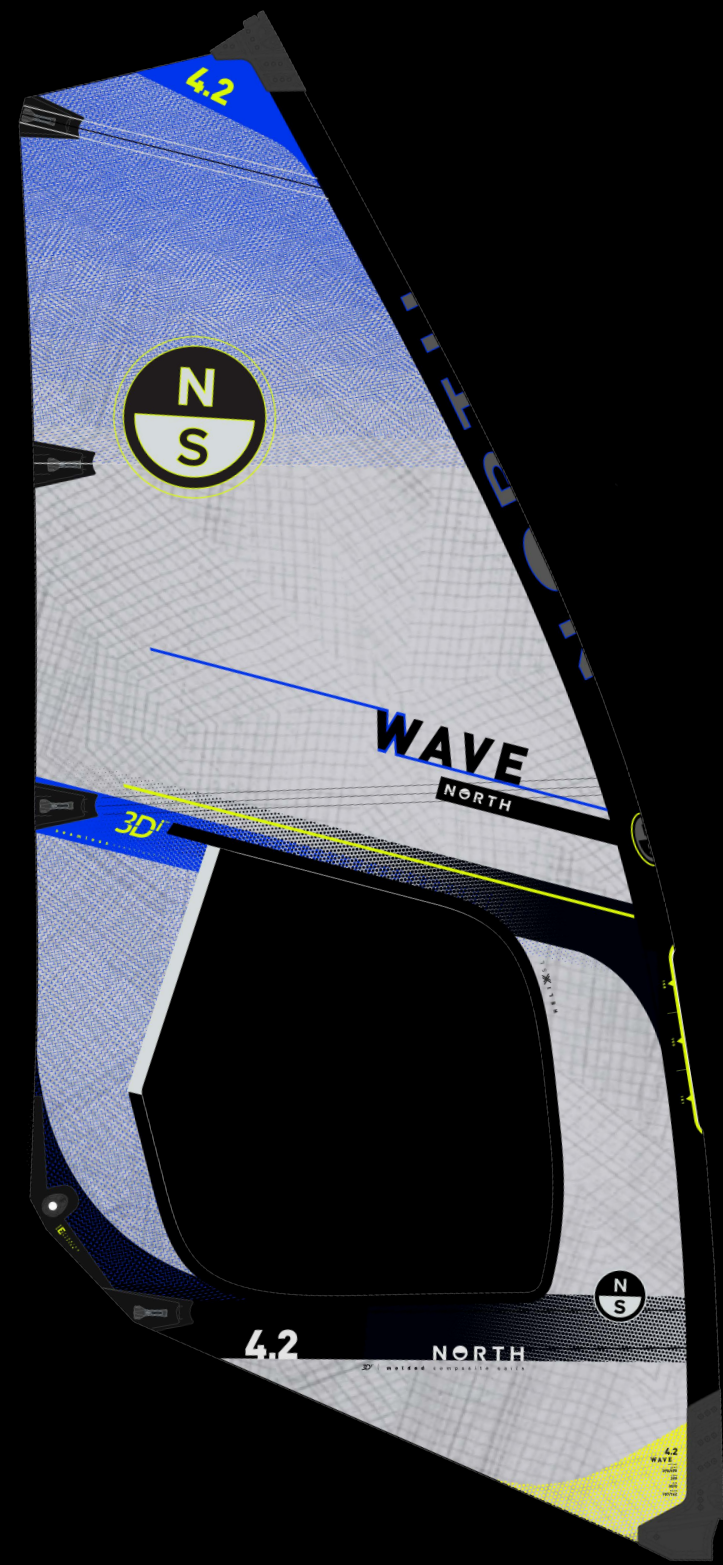


02

SAILLINEUP

SAILLINEUP

WAVE GEN3
3Di Wave



3.3 | 3.7 | 4.2 | 4.7 | 5.2 | 5.6

55000.270000

X-OVER GEN2
3Di X-Over



3.7 | 4.2 | 4.7 | 5.0 | 5.4 | 5.8 | 6.2 | 6.7

55000.250000

FREE SPEED GEN2
3Di Freespeed



4,5 | 5,2 | 6,0 | 6,8 | 7,7 | 8,6

55000.270004

RACE GEN3
3Di Freerace



5,2 | 6,0 | 6,8 | 7,7 | 8,6

55000.260001

WAVE GEN3

3.3 | 3.7 | 4.2 | 4.7 | 5.2 | 5.6

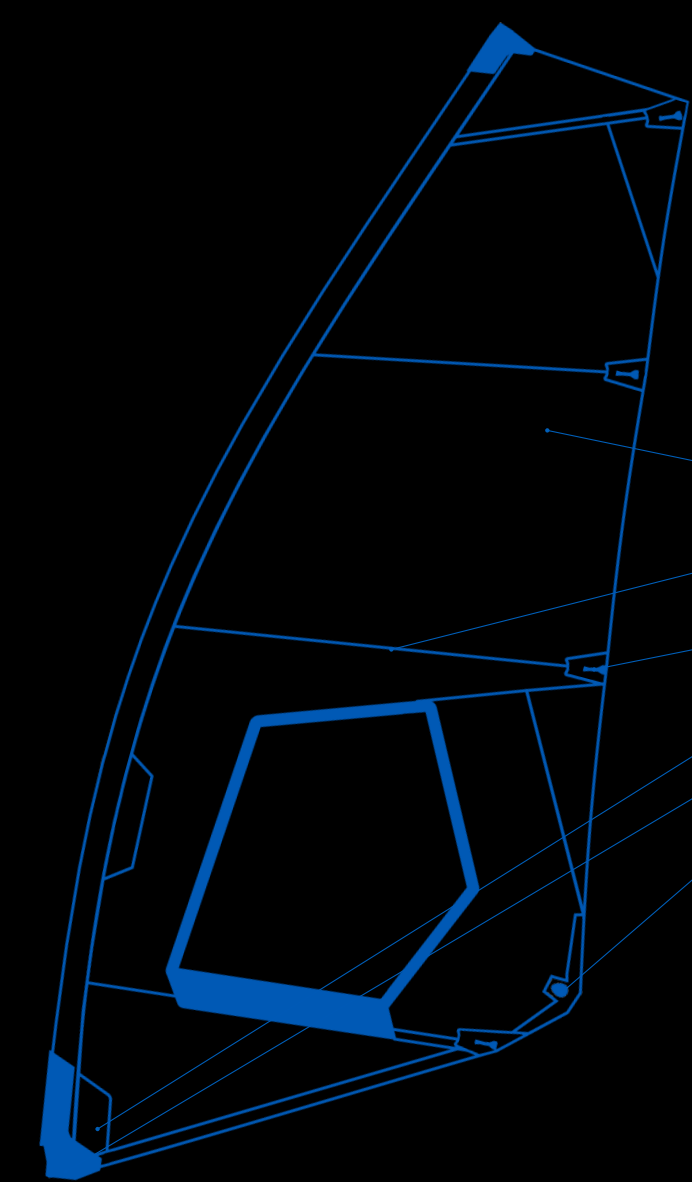
55000.270000

THE BEST JUST GOT BETTER.

WAVE GEN3, the ultimate sail for extreme conditions. With improved power delivery combined with amazing agility. Enhanced drive with amazing light and easy handling. Incredible wind range, with a more neutral feel.

No seams! All molded into one piece using exclusive Dyneema Aramid Fibers. The carbon fiber Helix SL load path provides a lively pop in the hands.

With an updated layout, the sail delivers increased drive to the rail and in the air, while maintaining stability for a more neutral feel. The result is seamless perfection in construction and sailing.



- 3Di Molded Technology
- Integrated Batten Pockets, with double tunnel
- Rock-it Batten Tensioner
- Integrated Material Reinforcements
- EZ Downhaul Wave
- EZ Clew

DESIGN PROFILE

Wave specific outline, profile, and batten geometry to give a performance-oriented wave sail that is very active, agile, and playful in the surf. A slightly deeper profile in the front of the sail, combined with more release at the leech, improves the sails forward drive and top-end handling.

ROCK-IT BATTEN TENSIONER

No tool batten adjustment, at the water's edge. Simply unlock, open, adjust, close, lock, and off you go.

EZ CLEW

With the EZ Clew it doesn't matter if you ride waves or race. It is compatible with your sails loop-loop-go system or your more conventional thread through outhauls. No matter the boom, the rigging is always perfect.

INTEGRATED BATTEN POCKETS WITH

DOUBLE TUNNEL

In between the sail's layers, we use a special tubular material, machine laid, to create the batten pocket. This is now reinforced with an extra overlap of 3Di from both sides of the sail, creating a "double tunnel" around the batten, allowing your sail and it's battens to withstand the hardest beatings. Complex material technology with a smart result.

E-Z DOWN-HAUL WAVE

Tack pulley with simple loop-loop-go system. When combined with the low downhaul tension of the sail rigging will be a breeze. A new and improved tack fairing allows for easier access to the sail's pulleys.

FEATURES

- X **3Di Molded Technology.** 3Di Molding provides unlimited precision in sail making, an unmatched process in the world of windsurfing. When combined with windsurfing's only simulation software, you hold today's best sail making technology in your hands.
- X **3Di Dyneema Aramid Tape Material with a Carbon Helix SL load path.** The best sails are made with a carefully engineered blend of the best performing materials. That's why 3Di sails are composed of **Dyneema Aramid**. It translates the wind instantly into forward drive at the flick of your wrist. The carbon fiber Helix SL load path inside the sail, running from tack to head, gives the sail a more lively pop in the hands.
- X **Integrated Material Reinforcements.** Precision use of the right quantity of materials, placed in the right orientation, results in a sail that is significantly **lighter and stronger** than any other windsurf sail. Light, yet super strong.

XOVER

3.7 | 4.2 | 4.7 | 5.0 | 5.4 | 5.8 | 6.2 | 6.7

55000.250000

AMAZING REAL-WORLD PERFORMANCE. GO BEYOND.

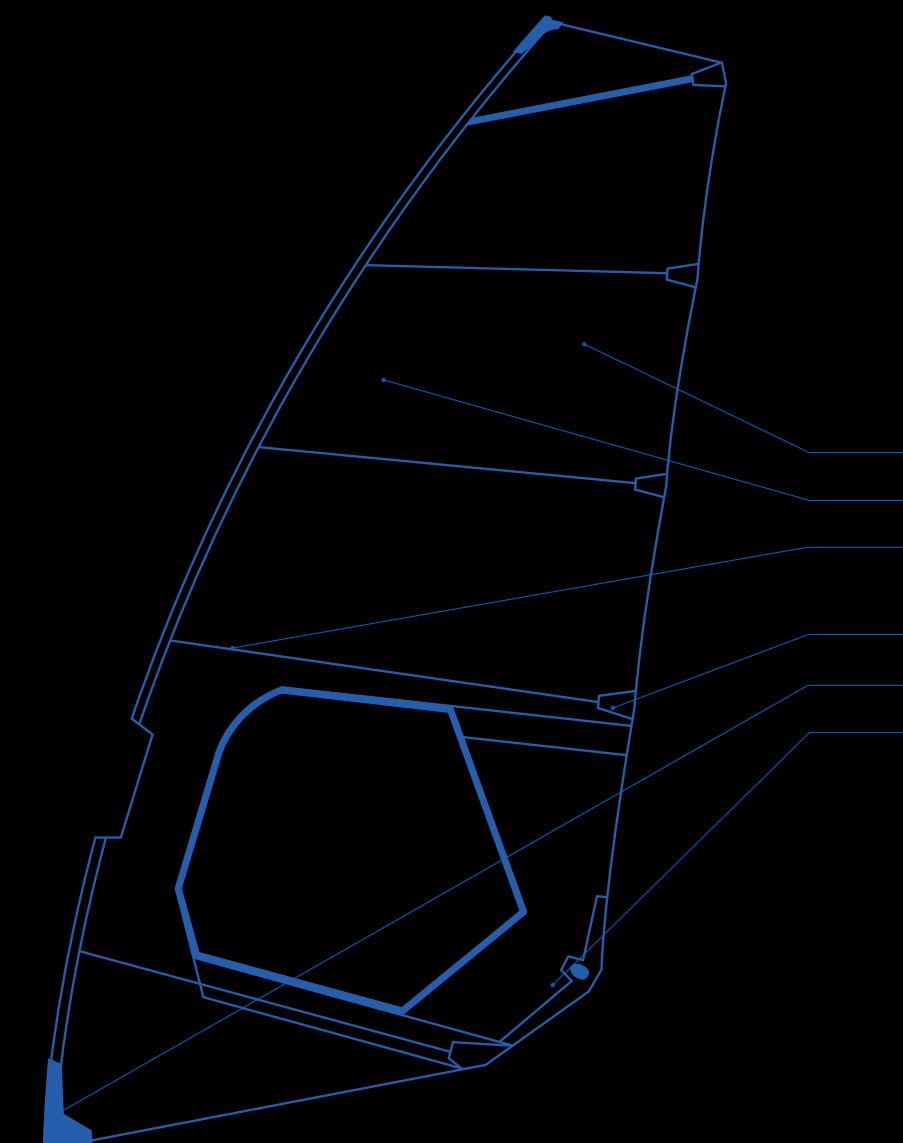
The X-Over sail range excels in all wind and water conditions. Sizes 3.7 to 5.8 are power wave sails with incredibly low swing weight, perfect for jumping and wave riding with stable power and speed. Sizes 6.2 and 6.7 are free-move sails, ideal for flatwater freeriding with stability, high speed, and easy upwind sailing. The Gen#2 version features improved profiles, twist, geometries, and added fiber reinforcements for enhanced stability, forward drive, high wind control, and top-end performance. It feels lighter on the water, delivering accessible power. A monofilm window improves visibility, and a wider trim range makes finding the "sweet spot" easier. Rigging is quick and easy: the EZ Downhaul Wave fits sizes up to 5.8, while the 6.2 and 6.7 come with the versatile EZ Downhaul 2-in-1, compatible with both RDM and MDM masts. The one-piece 3Di moulded construction, free of stitching or seams, ensures maximum durability. Revolutionary technology for windsurfing, brought to you exclusively by North Sails. Go Beyond.

SIZE	MAST	LUFF	EXT	BOOM	BATTENS	WEIGHT KG
3,7	340	358	18	148/152	4	1.95
4,2	370	378	8	155/156	4	2.20
4,7	370	298	28	166/170	4	2.40
5,0	370/400	402	32/02	172/176	5	2.55
5,4	400	422	22	177/181	5	2.70
5,8	430/400	434	4/34	184/188	5	2.95
6,2	430	452	22	191/194	5	3.10
6,7	430/460	464	34/4	197/200	5	3.30

*These numbers are indicative and might change.

FEATURES

- X **3Di Molded Technology.** 3Di Molding provides unlimited precision in sail making, an unmatched process in the world of windsurfing. When combined with windsurfing's only simulation software, you hold today's best sail making technology in your hands.
- X **3Di Dyneema Aramid Tape Material with a Carbon Helix SL load path.** The best sails are made with a carefully engineered blend of the best performing materials. That's why 3Di sails are composed of **Dyneema Aramid**. It translates the wind instantly into forward drive at the flick of your wrist. The carbon fiber Helix SL load path inside the sail, running from tack to head, gives the sail a more lively pop in the hands.
- X **Integrated Material Reinforcements.** Precision use of the right quantity of materials, placed in the right orientation, results in a sail that is significantly **lighter and stronger** than any other windsurf sail. Light, yet super strong.



- 3Di Molded Technology
- Integrated Material Reinforcements
- Integrated Batten Pockets, with Double Tunnel
- Rock-it Batten Tensioner
- EZ Downhaul WAVE
- EZ Clew

DESIGN PROFILE

X-Over specific outline, profile, and batten geometry to give a powerful and drive-oriented wave sail, ideal in all world conditions, from bump and jump through cross-shore and onshore conditions.

INTEGRATED BATTEN POCKETS WITH

DOUBLE TUNNEL

In between the sail's layers, we use a special tubular material, machine laid, to create the batten pocket. This is now reinforced with an extra overlap of 3Di from both sides of the sail, creating a "double tunnel" around the batten, allowing your sail and its battens to withstand the hardest beatings. Complex material technology with a smart result.

ROCK-IT BATTEN TENSIONER

No tool batten adjustment, at the water's edge. Simply unlock, open, adjust, close, lock, and off you go.

EZ CLEW

With the EZ Clew it doesn't matter if you ride waves or race. It is compatible with your sail's loop-loop-go system or your more conventional thread through outhauls. No matter the boom, the rigging is always perfect.

E-Z DOWN-HAUL WAVE

Tack pulley with simple loop-loop-go system. When combined with the low downhaul tension of the sail rigging will be a breeze.

FREE SPEED GEN2

4.5 | 5.2 | 6.0 | 6.8 | 7.7 | 8.6

55000.270004

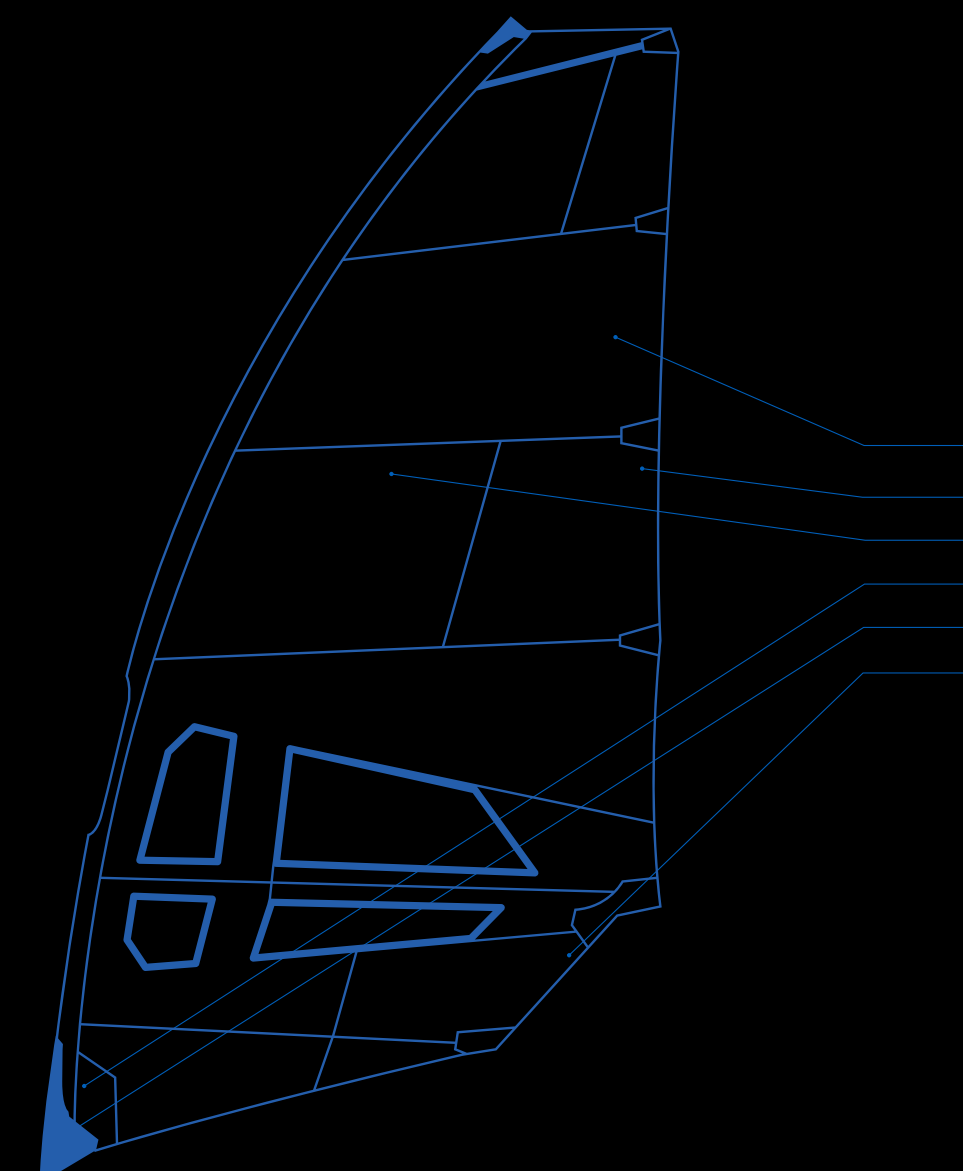
BECAUSE SPEED IS THRILLING.

The FREESPEED fiber layout and twist profiles inspired by our latest RACE result in unmatched no-cam performance, while we added focus on accessibility and handling. With a new complex fiber layout we have brought stability, acceleration and drive to a new level. A super light physical weight, combined with a low centre of gravity the FREESPEED completely revolutionize your experience on the water. The 6.8 tips the scales at only 3.6 kg ! With incredible drive, handling and top end performance this sail loves a fast board as a partner. The sail accelerates to top speed, and drives up wind effortlessly. The no-cam set-up makes rigging, handling and transitions a breeze. All sizes designed around a 6 batten configuration.

SIZE	MAST	LUFF	EXT	BOOM	BATTENS	WEIGHT KG
4,5	370				5	
5,2	400/370				6	
6,0	430/400				6	
6,8	430/460				6	
7,7	460/490				6	
8,6	490				6	

FEATURES

- X **3Di Molding Technology.** 3Di Molding provides unlimited precision in sail making, an unmatched process in the world of windsurfing. When combined with windsurfing's only simulation software, you hold today's best sail making technology in your hands.
- X **3Di Dyneema Aramid Tape Material with a Dyneema Aramid Helix SL load path.** The best sails are made with a carefully engineered blend of the best performing materials. That's why 3Di sails are composed of **Dyneema Aramid**. The Dyneema Aramid Helix SL load path, running from tack to head, gives the sail more dynamic stability. It translates the wind instantly into forward drive at the flick of your wrist.
- X **Integrated Material Reinforcements.** Precision use of the right quantity of materials, placed in the right orientation, results in a sail that is significantly **lighter and stronger** than any other windsurf sail. Light, yet super strong.



- 3Di Molding Technology
- Rock-it Batten Tensioner
- Integrated Batten Pockets
- Integrated Material Reinforcements
- EZ Downhaul 2-in-1
- EZ Clew

DESIGN PROFILE

With an outline, design and twist profiles inspired directly by our Racing sail, this sail has the added focus of accessibility and handling. Using the full benefits of 3Di shaping we are able to build impressive stability, acceleration and drive in a no-cam sail. A super light physical weight, combined with a low centre of gravity, completely revolutionize your experience on the water. A 6.8 tips the scales at only 3.6 kg ! A no-cam set-up makes transition a breeze, and rigging is super quick and simple.

ROCK-IT BATTEN TENSIONER

No tool batten adjustment, at the water's edge. Simply unlock, open, adjust, close, lock, and off you go.

INTEGRATED BATTEN POCKETS

A 100% seamless and continuous fiber layout, fully integrated tunnel with space for the battens. Complex material technology with a smart result.

EZ CLEW

With the EZ Clew it doesn't matter if you ride waves or race. It is compatible with your sail's loop-loop-go system or your more conventional thread through outhauls. No matter the boom, the rigging is always perfect.

EZ DOWNHAUL 2-IN-1

Tack pulley with a dual function. An 8-to-1 pulley block, including large low-friction corrosion-resistant plastic pulleys, is neatly built into the bottom of the tack fairing. Matches the MDM extensions and masts perfectly, for easy downhaul and maximum performance. Otherwise the outside parts of the block can also be used with a simple loop-loop-go system, based on the RDM extensions and masts.



RACE

5,2 | 6,0 | 6,8 | 7,7 | 8,6

55000.260001

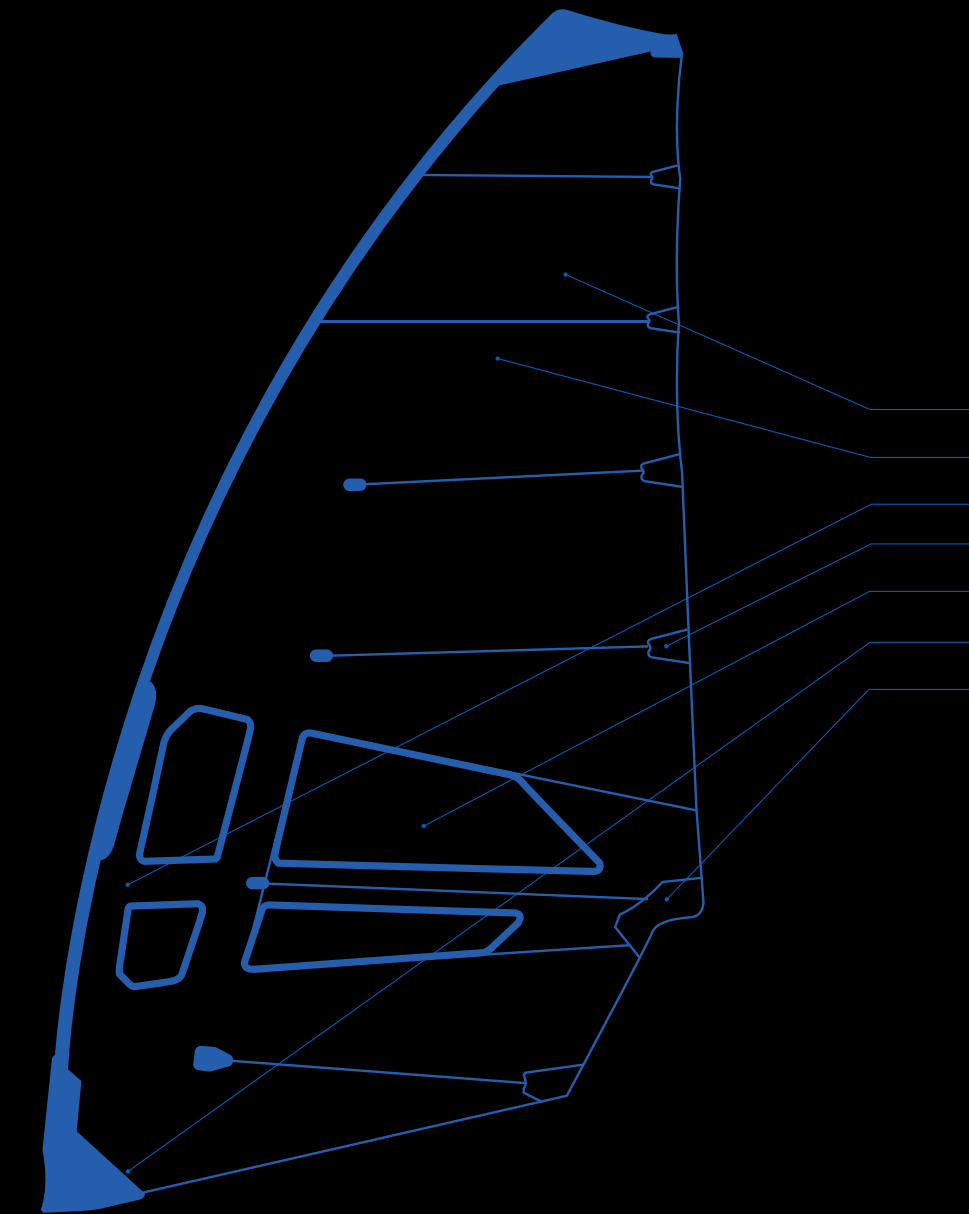
Explosive RACEcourse speed. GO BEYOND.

Our latest Slalom Race Sail is built for the uncompromising slalom racer. We've improved the pure top-end speed, making it easier for the rider to achieve this potential. With flatter profiles, updated twist designs, optimized draft positions, and an innovative material layout, this sail delivers unmatched performance over the whole wind range. Thanks to the latest 3Di engineering and composite molding methods, significant real and on-the-water weight savings allow the sail to feel virtually weightless in your hands, so you can concentrate solely on perfecting your board's trim. Revolutionary technology for windsurfing, brought to you exclusively by North Sails. Go Beyond.

SIZE	MAST	LUFF	EXT	BOOM	BATTENS	WEIGHT KG
5,2	400	406	6	166/169	6	4.10
6,0	430	438	8	180/183	6	4.30
6,8	430	456	26	192/196	6	4.50
7,7	460/490	492	32/2	202/206	6	4.70
8,6	490	518	28	210/214	6	5.00

FEATURES

- x **3Di Molding** provides unlimited precision in sail making, an unmatched process in the world of windsurfing. When combined with windsurfing's only simulation software, you hold today's best sail making technology in your hands, as proven by countless victories in the America's Cup & Volvo Ocean Races.
- x The best sails are made with a carefully engineered blend of the best performing materials. That's why for 3Di flatwater sails we chose to make them out of **Carbon Dyneema Aramid**. The added carbon improves the reactivity and response of the flatwater sails. It translates the wind instantly into forward drive at the flick of your wrist.
- x **Air Cam** matches the profile of the sail perfectly, giving improved airflow, profile and stability. **Lightweight**, because **it's all air**, you'll get effortless rotation. With air in the luff pocket it helps with waterstarts as well.



- Integrated Material Reinforcements
- 3Di
- Air Cam
- Rock-It Batten Tensioner
- Clear Windows
- EZ Downhaul Race
- EZ Clew

DESIGN PROFILE

With an outline and a profile inspired by our Racing sail, this sail has the added focus of accessibility and handling, allowing you to achieve full speed more easily. This sail will be a tough one to keep up with.

INTEGRATED BATTEN

POCKETS, SEAMLESS SPLITTING

POCKETS & BATTENS

A 100% seamless and continuous fiber layout, fully integrated tunnel with space for the battens. On all flatwater sails fitted with air cams, the batten pockets split seamlessly from 1 piece in the body, to 2 pieces either side of the air cam, maximizing efficiency and flow. Complex material technology with a smart result.

ROCK-IT BATTEN TENSIONER

No tool batten adjustment, at the water's edge. Simply unlock, open, adjust, close, lock and off you go.

EZ CLEW

With the EZ Clew it doesn't matter if you ride waves or race. It is compatible with your sails loop-loop-go system, or your more conventional thread through outhauls. No matter the boom, the rigging is always perfect.

EZ DOWNHAUL RACE

An 8-to-1 pulley block, including large low friction corrosion resistant plastic pulleys, is neatly built into the bottom of the tack fairing. Downhaul your sail with maximum tension, minimum friction, and minimum effort.

INTEGRATED MATERIAL

REINFORCEMENTS

Precision use of the right quantity of materials, placed in the right orientation, results in a sail that is significantly lighter and stronger than any other windsurf sail. Light, yet super strong.



MASTLINEUP

UNMATCHED QUALITY THROUGH MAST INNOVATION

The North Mast program is truly one of a kind. Built with advanced filament winding and a complex fiber matrix, our masts achieve a level of performance that no other brand can match. By precisely angling fibers around a mandrel with variable pitch, we create masts with the smoothest bending curve, exceptional strength-to-weight ratio, and superior durability. This meticulous process ensures that every mast is identical, offering unmatched reliability and performance on the water.

CONTINUOUS PRE-PREG FIBERS

Unbroken fibers run the entire mast length, eliminating breaking points and abrupt stiffness changes. This creates a seamless, consistent feel with unparalleled durability and performance you'll notice on the water.

VARIABLE PITCH FIBER MATRIX

Fibers are laid at changing angles along the mandrel, allowing specific sections to flex or stiffen as needed. By reducing the fiber angle in certain areas, the mast becomes softer while simultaneously increasing wall thickness and strength. This ensures the perfect bending curve, balancing flexibility and durability where they are needed most.

PRECISION FIBER ORIENTATION AND HIGH FIBER VOLUME

With the EZ Clew it doesn't matter if you ride waves or race. It is compatible with your sails loop-loop-go system, or your more conventional thread through outhauls. No matter the boom, the rigging is always perfect.



MA S T E R L I N E U P

	3K CARBON	24K CARBON	TOW PREG	VARIABLE PITCH	MUSHROOM SAND STOPPER	INTEGRATED FERRULE 2.0
ULTIMATE RDM 340 370 400 430 550001.210007 	•		•	•	•	•
OPTIMA MDM 400 430 460 490 530 550001.210006 	•		•	•	•	•
LOCAL PRO RDM 370 400 430 550000.230002 		•	•	•	•	•
LOCAL PRO MDM 430 460 490 550000.230003 		•	•	•	•	•

ULTIMATE RDM

340 | 370 | 400 | 430

55001.210007

A must-have for all wave sailors who want to get the most out of their North Sail and are looking to combine the best possible performance with unmatched durability. The highest quality 3K carbon is used in these masts, laid in a Tow Preg matrix of fibers. When combined with your sail the mast offers a unique blend of reactivity and lightweight feeling performance, yet can still take a pounding in the waves. A no compromise product. The ultimate combination of design, materials & technology. Go Beyond.



CONTINUOUS FIBERS FOR SUPER STRENGTH, MINIMUM WEIGHT, AND MAXIMUM RESPONSE.

FEATURES

- x Tow Preg: Continuous fibers for super strength, minimum weight, and maximum response.
Speeding up or slowing down the rotation of the mandrel allows for variation in the angle of the fibers, without reducing fiber count. This precisely controls the bend curve, softness, and stiffness of the mast. The result is a super smooth bend curve that matches the design of the sail exactly
- x Integrated Ferrule: Variable pitch allows us to make **bend curve smoother** and softer at the ferrule joint, compensating for the inherent stiffness at the mast's connection point.
- x CNC Tapered Ferrule insures perfect fit while preventing the mast from becoming stuck.



OPTIMA MDM

400 | 430 | 460 | 490 | 530

55001.210006

A must-have for all racers looking to achieve optimum performance and those trying to get the most out of their North Sail. A mast designed for winning races at any level. If you want your sail to perform to it's maximum potential, then you also need a mast that is up for the job. The highest quality 3K carbon is used in these masts, laid in a Tow Preg matrix of fibers. When combined with your sail the mast offers a unique blend of reactivity and light weight feeling performance. A no compromise product. The ultimate combination of design, materials & technology. Go Beyond.



SUPER SMOOTH AND PRECISE BEND CURVES MATCHING THE SAIL DESIGN EXACTLY.

FEATURES

- x A mast that sits in between both RDM and SDM, a new diameter that allows us to use today's best materials in their most efficient way to give you maximum performance, minimal weight and optimum durability.
- x Tow Preg: Continuous fibers for super strength, minimum weight, and maximum response.
Speeding up or slowing down the rotation of the mandrel allows for variation in the angle of the fibers, without reducing fiber count. This precisely controls the bend curve, softness, and stiffness of the mast. The result is a super smooth bend curve that matches the design of the sail exactly
- x CNC Tapered Ferrule insures perfect fit while preventing the mast from becoming stuck.



LOCAL PRO RDM

370 | 400 | 430

55001.230002

The Local Pro masts are ideal for ripping your local spot. A must-have for all wave sailors wanting to push their riding as hard as possible, and who want to get the most out of their North Sail, without going overboard. The Local Pro is an accessible 100% carbon mast, using a performance grade of 24k carbon, laid in a Tow Preg matrix of fibers. Let your sail's performance run free with this mast. A unique combination of design, materials & technology. Go Beyond.



SUPER SMOOTH AND PRECISE BEND CURVES MATCH THE SAIL DESIGN EXACTLY..

FEATURES

- x Tow Preg: Continuous fibers for super strength, minimum weight, and maximum response.
- x Variable Pitch: Super smooth and precise bend curves match the sail design exactly.
- x Integrated Ferrule 2.0: Variable pitch allows us to make **bend curve smoother** and softer at the ferrule joint, compensating for the inherent stiffness at the mast's connection point.
- x CNC Tapered Ferrule insures perfect fit while preventing the mast from becoming stuck.

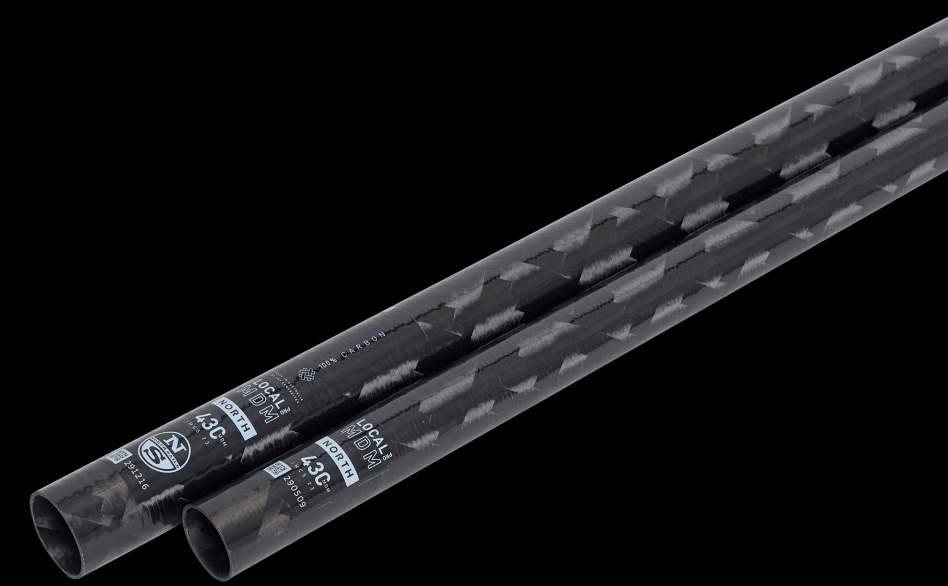


LOCAL PRO MDM

430 | 460 | 490

55001.230003

The Local Pro masts are ideal for ripping your local spot. A must-have for all Free Race, Free Ride or even Slalom Racers, wanting to push their riding as hard as possible, and who to get the most out of their North Sail, without going overboard. The Local Pro is an accessible 100% carbon mast, using a performance grade of 24k carbon, laid in a Tow Preg matrix of fibers. Let your sail's performance run free with this mast. A unique combination of design, materials & technology. Go Beyond.



SUPER SMOOTH AND PRECISE BEND CURVES MATCH THE SAIL DESIGN EXACTLY.

FEATURES

- x MDM - Medium Diameter Mast: A mast that sits in between both RDM and SDM, a new diameter that allows us to use today's best materials in their most efficient way to give you maximum performance, minimal weight and optimum durability.
- x Tow Preg: Continuous fibers for super strength, minimum weight, and maximum response.
- x Variable Pitch: Super smooth and precise bend curves match the sail design exactly.
- x CNC Tapered Ferrule insures perfect fit while preventing the mast from becoming stuck.





BOOMLINEUP

PRECISION-TAILORED BOOMS

FOR
OPT
IMA
LPE
RFO
RMA
NCE

At North, each boom is a one-of-a-kind innovation, meticulously engineered to deliver unparalleled precision. Every detail—from design to layup to material selection—is uniquely crafted for its specific size and purpose. This approach ensures every boom features a distinct construction, offering seamless compatibility with its corresponding sail range and peak performance on the water.



ULTIMATE WAVE

135-185 | 150-200

55004.250007

Ultimate Carbon Booms aim to complete the windsurf boom trifecta of maximizing stiffness and strength with minimum weight. With a FEM optimized lay-up, material is added only to high stress areas, ensuring that it can be removed in low stress areas, and only put material where you need it. All features ensure that your sail is turbocharged and performing to maximum design potential. Drive your sail with maximum responsiveness, with instant feedback, at the flick of a wrist. A unique combination of design, materials & technology. Go Beyond.

135-185

Engineered with the narrowest outline and smallest tail, this boom offers exceptional control, a lighter feel, and perfect hand positioning for compact sail setups. Ideal for Wave or X-Over use.

150-200

Featuring a slightly wider outline and tail, this boom enhances leverage and sail efficiency for larger rigs while maintaining optimal power transfer. Perfect for Wave or X-Over use.

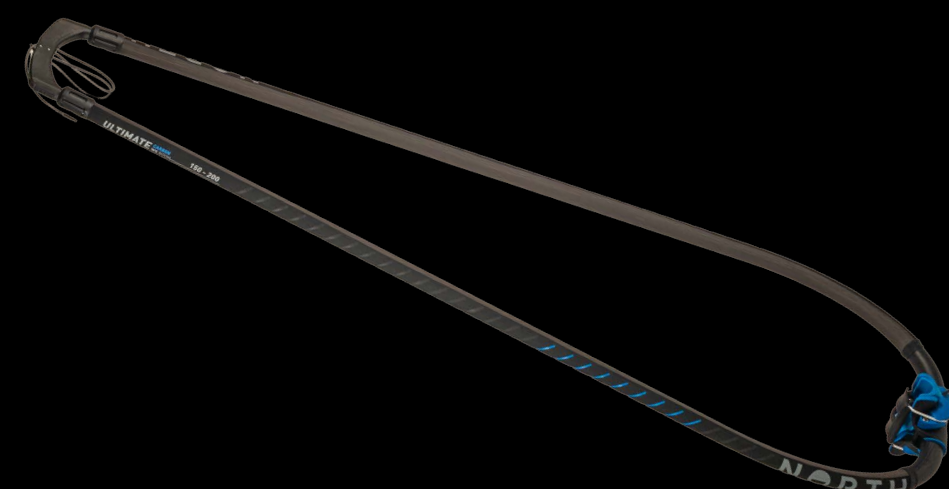
Recommended Sail Sizes: 3.3 – 4.7

Recommended Sail Sizes: 4.2 – 5.8

MIX T800 & T300 CARBON

FEATURES

- x The Finite Element Method (FEM) is an optimized fiber lay-up method that analyzes across the boom exactly where and how much material is required for the intended purpose. No excess material is used, only what you need to maximize performance and durability.
- x A monocoque front end ensures a direct transmission of power from the sail to the rider through to the board. Maximum stiffness, instant feedback and maximum drive.
- x Carbon Reinforced Boom Head, Single Piece, fits all masts : RDM with shim, MDM or SDM without.



ULTIMATE XOVER

160-210

5500.250008

Ultimate Carbon Booms aim to complete the windsurf boom trifecta of maximizing stiffness and strength with minimum weight. With a FEM optimized lay-up, material is added only to high-stress areas, ensuring that it can be removed in low-stress areas, and only put material where you need it. All features ensure that your sail is turbocharged and performing to maximum design potential. Drive your sail with maximum responsiveness, with instant feedback, at the flick of a wrist. A unique combination of design, materials & technology. Go Beyond.

With a wider outline and a refined front curve, this boom accommodates deeper sail profiles, offering superior lift and power for larger setups.

Best for FreeSpeed, FreeFoil, or X-Over use.

Recommended Sail Sizes: 5.0 – 6.8

MIX T800 & T300 CARBON

FEATURES

- x The Finite Element Method (FEM) is an optimized fiber lay-up method that analyzes across the boom exactly where and how much material is required for the intended purpose. No excess material is used, only what you need to maximize performance and durability.
- x A monocoque front end ensures a direct transmission of power from the sail to the rider through to the board. Maximum stiffness, instant feedback, and maximum drive.
- x One of the lightest boom heads on the market. Loads are carried by one single piece, with carbon reinforcement, and distributed evenly across the boom and the mast. Fits all masts: RDM (with Shim), MDM, or SDM.



ULTIMATE RACE

165-205

55004.250009

Ultimate Carbon Booms aim to complete the windsurf boom trifecta of maximizing stiffness and strength with minimum weight. With a FEM optimized lay-up, material is added only to high stress areas, ensuring that it can be removed in low stress areas, and only put material where you need it. All features ensure that your sail is turbocharged and performing to maximum design potential. Drive your sail with maximum responsiveness, with instant feedback, at the flick of a wrist. A unique combination of design, materials & technology. Go Beyond.

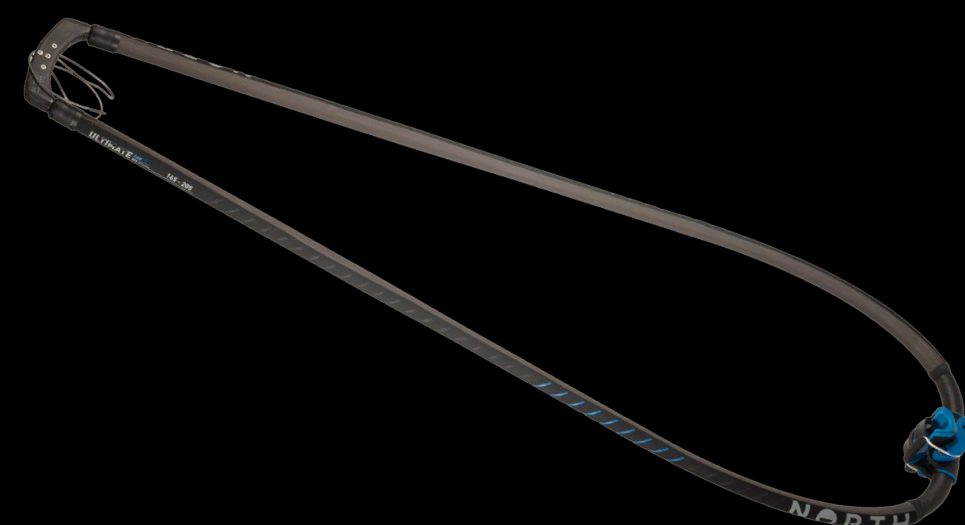
Designed for ultimate stiffness and responsiveness, this performance boom features a slightly larger grip diameter and an increased back-end diameter for exceptional rigidity and feedback. Its race-oriented outline, with a wide point set further back, positions the rider for maximum speed and control.

Recommended Sails: Small Foil and Race sails, FreeSpeed, FreeFoil

100% T800 CARBON

FEATURES

- X The Finite Element Method (FEM) is an optimized fiber lay-up method that analyses across the boom exactly where and how much material is required for the intended purpose. No excess material is used, only what you need to maximize performance and durability.
- X A monocoque front end ensures a direct transmission of power from the sail to the rider through to the board. Maximum stiffness, instant feedback and maximum drive.
- X Carbon Reinforced Boom Head, Single Piece, fits all masts : RDM with shim, MDM or SDM without.



ULTIMATE RACE

180-230

55004.250009

Ultimate Carbon Booms aim to complete the windsurf boom trifecta of maximizing stiffness and strength with minimum weight. With a FEM optimized lay-up, material is added only to high stress areas, ensuring that it can be removed in low stress areas, and only put material where you need it. All features ensure that your sail is turbocharged and performing to maximum design potential. Drive your sail with maximum responsiveness, with instant feedback, at the flick of a wrist. A unique combination of design, materials & technology. Go Beyond.

Optimized for larger sails, this performance boom offers unmatched stiffness and response, even at extended lengths, thanks to its larger grip diameter and reinforced back section. The race-specific outline positions the rider efficiently for enhanced speed and control, while the integrated adjustable outhaul system ensures precise tuning.

Recommended Sails: Large Foil and Race sails, FreeSpeed, FreeFoil

100% T800 CARBON

FEATURES

- X The Finite Element Method (FEM) is an optimized fiber lay-up method that analyses across the boom exactly where and how much material is required for the intended purpose. No excess material is used, only what you need to maximize performance and durability.
- X A monocoque front end ensures a direct transmission of power from the sail to the rider through to the board. Maximum stiffness, instant feedback and maximum drive.
- X Carbon Reinforced Boom Head, Single Piece, fits all masts : RDM with shim, MDM or SDM without.



05

EXTSLINEUP

RDM ALUMINIUM

ONE SIZE 34 CM

55009.220100

North Sails RDM extensions ensure that you spend less time rigging and maximize your time out on the water. The Aluminium is our alternative to the Carbon, with the same innovative features. The loop-loop-go system makes rigging simple and seamless, even on the downhaul. The low stretch Dyneema rope greatly reduces friction, and downhaul can be applied with just your hands on most Wave and X-Over sails. The extension ring has a simple to use Pop & Slide system, so setting the right length becomes intuitive. The U-Pin button sits discreetly on the extension tube and has a manual locking function for safety and peace of mind, whether you're in the waves or during long slalom reaches. High-grade plastic and stainless steel components ensure the extension will be in your quiver for many years to come.

T6061 ALUMINIUM FOR MAXIMUM DURABILITY.

FEATURES

- x These extensions **match your sail perfectly**. Making rigging as simple as loop the rope, downhaul, tuck it away and go!
- x Discreet **U-Pin button**, with manual locking mechanism. An essential safety feature for use in the waves, or during long slalom and free ride reaches.
- x Low stretch Dyneema rope **greatly reduces downhaul friction**, makes downhauling much easier, and lasts.
- x Pop & Slide Extension ring. Quality stainless steel.



RDM CARBON

ONE SIZE 34 CM

55009.220104

North Sails RDM extensions ensure that you spend less time rigging and maximize your time out on the water. The Carbon is our lightest RDM extension, offering a more compact and stiff material for optimum rigging and performance. All North Sails extensions are packed with innovative features. The loop-loop-go system makes rigging simple and seamless, even on the downhaul. The low stretch Dyneema rope greatly reduces friction, and downhaul can be applied with just your hands on most Wave and X-Over sails. The extension ring has a simple to use Pop & Slide system, so setting the right length becomes intuitive. The U-Pin button sits discreetly on the extension tube and has a manual locking function for safety and peace of mind, whether you're in the waves or during long slalom reaches. High-grade plastic and stainless steel components ensure the extension will be in your quiver for many years to come.

100% CARBON TUBE FOR MINIMUM WEIGHT

FEATURES

- x These extensions **match your sail perfectly**. Making rigging as simple as loop the rope, downhaul, tuck it away and go!
- x Discreet **U-Pin button**, with manual locking mechanism. An essential safety feature for in the waves, during long slalom and freeride reaches.
- x Low stretch Dyneema rope **greatly reduces downhaul friction**, makes downhauling much easier, and lasts.
- x Pop & Slide Extension ring. Quality stainless steel.
- x The Carbon is our **lighter and stiffer** RDM extension for optimum rigging and performance.



MDM ALUMINIUM

ONE SIZE 34 CM

55009.220101

North Sails MDM extensions ensure that you spend less time rigging and maximize your time out on the water. The Aluminium is our alternative to the Carbon, with the same innovative features. The MDM extension includes 4 oversized, low friction, easy thread, corrosion resistant plastic pulleys, that line up perfectly with the sail. When combined with the low stretch Dyneema rope, an 8-to-1 pulley ratio makes high tension downhaul easier, allowing the finest adjustment with ease. The extension ring has a simple to use Pop & Slide system, so setting the right length becomes intuitive. The U-Pin button sits discreetly on the extension tube and has a manual locking function for safety and peace of mind, during long slalom reaches or ocean runs. High-grade plastic and stainless steel components ensure the extension will be in your quiver for many years to come.

T6061 ALUMINIUM TUBE FOR MAXIMUM DURABILITY

FEATURES

- x These extensions **match your sail perfectly**. Making rigging as simple threading the rope round and round, downhaul, tuck it away and go!
- x Discreet **U-Pin button**, with manual locking mechanism. An essential safety feature for in the waves, during long slalom and freeride reaches.
- x Low stretch Dyneema rope **greatly reduces downhaul friction**, makes downhauling much easier, and lasts.
- x Pop & Slide Extension ring. Quality stainless steel. Intuitive to use, never lose.



MDM CARBON

ONE SIZE 34 CM

55009.220102

North Sails MDM extensions ensure that you spend less time rigging and maximize your time out on the water. The Carbon is our lightest MDM extension, offering a more compact and stiff material for optimum performance. The MDM extension includes 4 oversized, low friction, easy thread, corrosion resistant plastic pulleys, that line up perfectly with the sail. When combined with the low stretch Dyneema rope, an 8-to-1 pulley ratio makes high tension downhaul easier, allowing the finest adjustment with ease. The extension ring has a simple to use Pop & Slide system, so setting the right length becomes intuitive. The U-Pin button sits discreetly on the extension tube and has a manual locking function for safety and peace of mind, during long slalom reaches or ocean runs. High-grade plastic and stainless steel components ensure the extension will be in your quiver for many years to come.

100% CARBON TUBE FOR MINIMUM WEIGHT

FEATURES

- x These extensions **match your sail perfectly**. Making rigging as simple threading the rope round and round, downhaul, tuck it away and go!
- x Discreet **U-Pin button**, with manual locking mechanism. An essential safety feature for in the waves, during long slalom and freeride reaches.
- x Low stretch Dyneema rope **greatly reduces downhaul friction**, makes downhauling much easier, and lasts.
- x Pop & Slide Extension ring. Quality stainless steel. Intuitive to use, never lose.
- x The Carbon is our **lighter and stiffer** MDM extension for optimum rigging and performance



MAST BASE LINEUP

DIABOLO WAVE

ONE SIZE

55004.230004

For all wave sailors, the Diabolo Wave mast base is a must have. The Diabolo still offers the best blend between performance power transmission for precision wave sailing, and power absorption, critical when landing sky high jumps. A relatively low profile ensures that the center of effort of the rig package stays low and in control. A direct connection from the board to the stainless base plate ensures a crisp feel. An old friend from way back, but a good one.



TPU DIABOLO JOINT

FEATURES

- x Low Profile
- x Direct connection board to base
- x Single piece stainless steel euro pin
- x External safety webbing
- x Screwdriver hole for easy disassembly
- x Replaceable diabolo joint for long-term use of the mast base

TENDON FREERIDE

ONE SIZE

55004.230005

The Tendon Freeride mast base is our most versatile mast base, and can be used from wave surfing and freeride, through to racing in choppy conditions. Your reliable go-to mast base for most sessions. A TPU tendon joint transmits the power directly from the rig through to the board. A relatively low profile ensures that the center of effort of the rig package stays low and in control. A direct connection from the board to the stainless base plate ensures a crisp feel. An internal safety rope, inside the tendon, ensures that in the event of breakage you have the best chance of making it home again, safely.



TPU TENDON JOINT

FEATURES

- x Low Profile
- x Direct connection board to base
- x Single piece stainless steel euro pin
- x Internal safety webbing
- x Screwdriver hole for easy disassembly
- x Easily replaceable tendon, for long-term use of the mast base

CREDITS

PRODUCTION

North Actionsports Group

PHOTOGRAPHY

Fish Bowl Diaries

Samu Cardenas

Pierre Bouras

PRODUCT PHOTOGRAPHY

Milo McCafferty

Celine Gijzen

All artwork, styling and design by North Windsurfing,
part of the North Actionsports B.V. Production 2023

Published by North Actionsports B.V. All rights reserved.

No parts of this publication may be reproduced or transmitted in any form or by any means,
electronic or mechanical, including photocopy, recording or any information storage and
retrieval system without permission in writing from North Actionsports B.V. Katwijk, The Netherlands.

